



Majete Wildlife Reserve

MALAWI

715 KM² | AFRICAN PARKS PROJECT SINCE 2003

This highly diverse 715 km² reserve features undulating hills, low-lying grassy plains, and mixed woodland punctuated by the ghost-like Star Chestnut trees and large mahoganies. To the reserve's east, the Shire river cuts through the landscape and ultimately crashes over the Kapuchira Falls. Majete Hill, the reserve's highest point, provides a breath-taking vantage point from which to see the whole reserve.

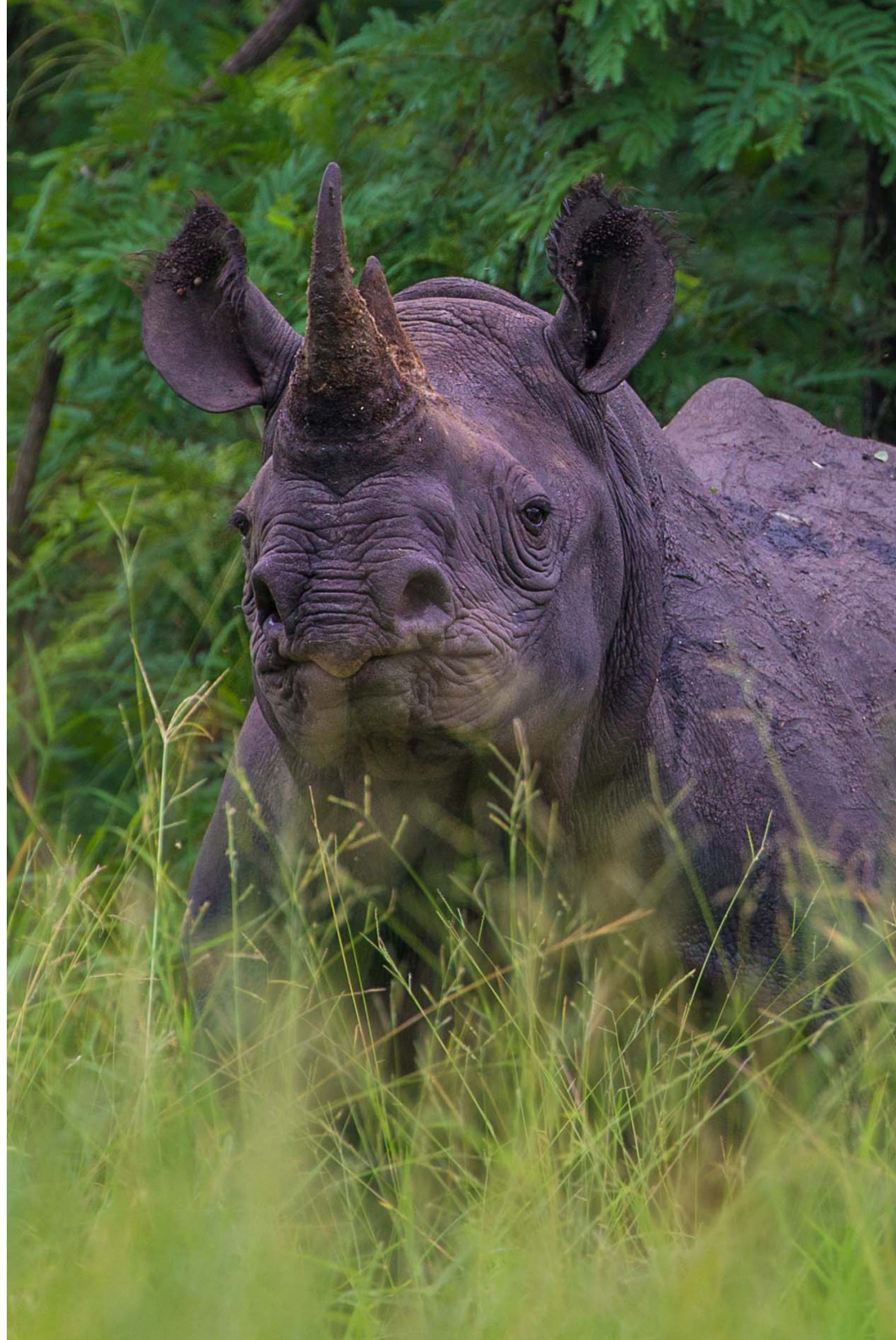
Visitors to the reserve can expect strong elephant sightings, punctuated with the chance at predator sightings and always a steady stream of general wildlife. Safari by boat is a highlight to complement the game drives.

With excellent vegetation, ungulates such as kudu, sable antelope and zebra thrive and provide a healthy prey base for a full guild of predators. As a wildlife stronghold in Malawi, Majete also boasts some specials: nyala, shy klipspringer and recently reintroduced giraffe. Birders are also well catered for in Majete, which is home to four species of vulture and local specials such as Livingstone's flycatcher, Boehm's bee-eater and racket-tailed roller, which are all regularly sighted.

 NOVEMBER TO APRIL  MAY TO OCTOBER



Majete Wildlife Reserve is managed by African Parks in partnership with the Malawian Department of National Parks and Wildlife



Located in southern Malawi's low-lying Shire river valley and surrounded by rocky highlands.



ACCESS

A 90 minute drive (70km) from the city of Blantyre; and 5.5 hours drive (380km) from the capital of Lilongwe. Also accessible by private charter. 4x4 vehicle recommended in wet season.

RESERVATIONS

majete@africanparks.org
+265 999 521 741



Thawale Camp

In prime location for easy access to the reserve, and with its own productive waterhole, Thawale Camp is a simple peaceful outpost from which to experience Majete's diverse wildlife offering. Completely unfenced, a stay here is a safari in its own right.

Adding to the lure is Thawale Camp's conservation model whereby 100% of its revenue is ploughed directly back into the reserve and surrounding communities.

**FROM \$120
PER PERSON
PER NIGHT**



CAMP SIZE

6 classic en-suite tents
1 family chalet consisting
of two en-suite bedrooms

1 main lounge
and dining area
with views to
the bustling waterhole



ACTIVITIES

Game drives
Boat trips on the Shire river
Bird walks

INCLUSIONS

All meals,
one activity per night,
laundry



Thawale Camp is located inside the reserve, 15 minutes from the main gate.



ACCESS

A 90 minute drive (70km) from the city of Blantyre; and 5.5 hours drive (380km) from the capital of Lilongwe. Also accessible by private charter. 4x4 vehicle recommended in wet season.

RESERVATIONS

majete@africanparks.org
+265 999 521 741



Thawale Camp



RESERVE HOURS
6:00am to 6:00pm



TENT DETAILS

6 tents (4 double or twin/2 double)
1 one family chalet of one double and one twin
24 hour power, in tents and main area
En-suite bathrooms with hot/cold tapped water, flush toilets & showers (1 honeymoon tent with bath)
Safes in each tent



HEALTH & SAFETY
Malaria prophylactics recommended.
All other vaccines, please consult your physician.
Medical evacuation insurance required.



SERVICES

Laundry included
Private vehicle at extra cost
Intermittent cellular coverage
No internet



CHILD POLICY

Children 12 & older may participate in boat or bird walk activity.
No children 3 & under allowed in camp, unless on exception.
The camp is located in a predator dense reserve and children must be supervised at all times.



MONEY

Visa & Mastercard accepted
Currency accepted: Malawian kwacha, US dollar, euros, South African rand and GB pound.



SEASONS

Majete has a tropical to sub-tropical climate, so temperatures remain high for much of the year.



THE GREEN SEASON
NOVEMBER TO APRIL

Average Rainfall: 122mm/month
Average Temperature: 30°C
High Humidity



THE DRY SEASON
MAY TO OCTOBER

Average Rainfall: 12mm/month
Average Temperature: 25°C
Low Humidity

RESERVATIONS

majete@africanparks.org
+265 999 521 741

